

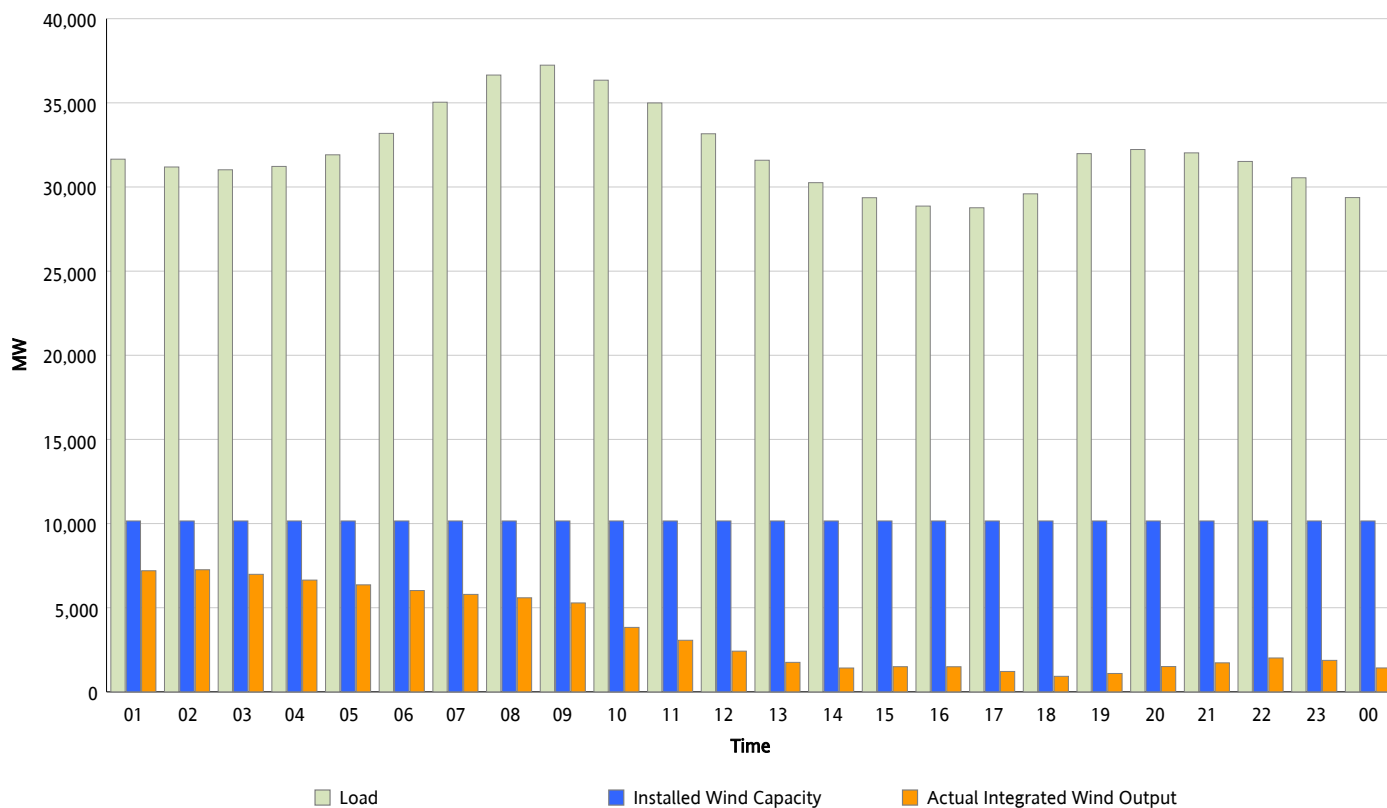


ERCOT Grid Operations

Wind Integration Report : 01/19/2013

Peak Load	37,238 MW
Load Peak Hour (HE)	09
Wind Over Peak	5,285 MW
Wind Record 12/25/12	8,638 MW
Max Wind Value*	7,371 MW
Wind Peak Time	01:27
Wind Integration %	23.62 %

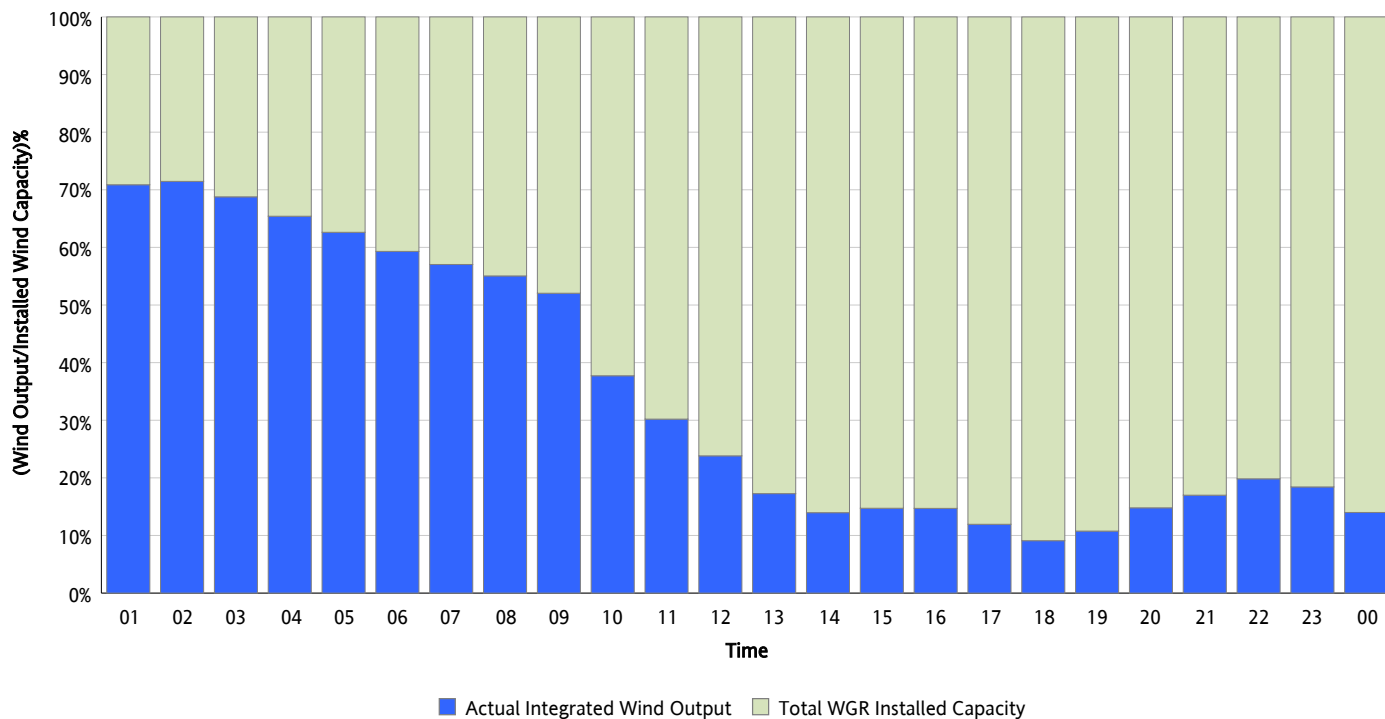
Hourly Average Actual Load vs. Actual Wind Output
01/19/2013



* Wind Record and Wind Max represent instantaneous values and the rest of the values are integrated over the hour

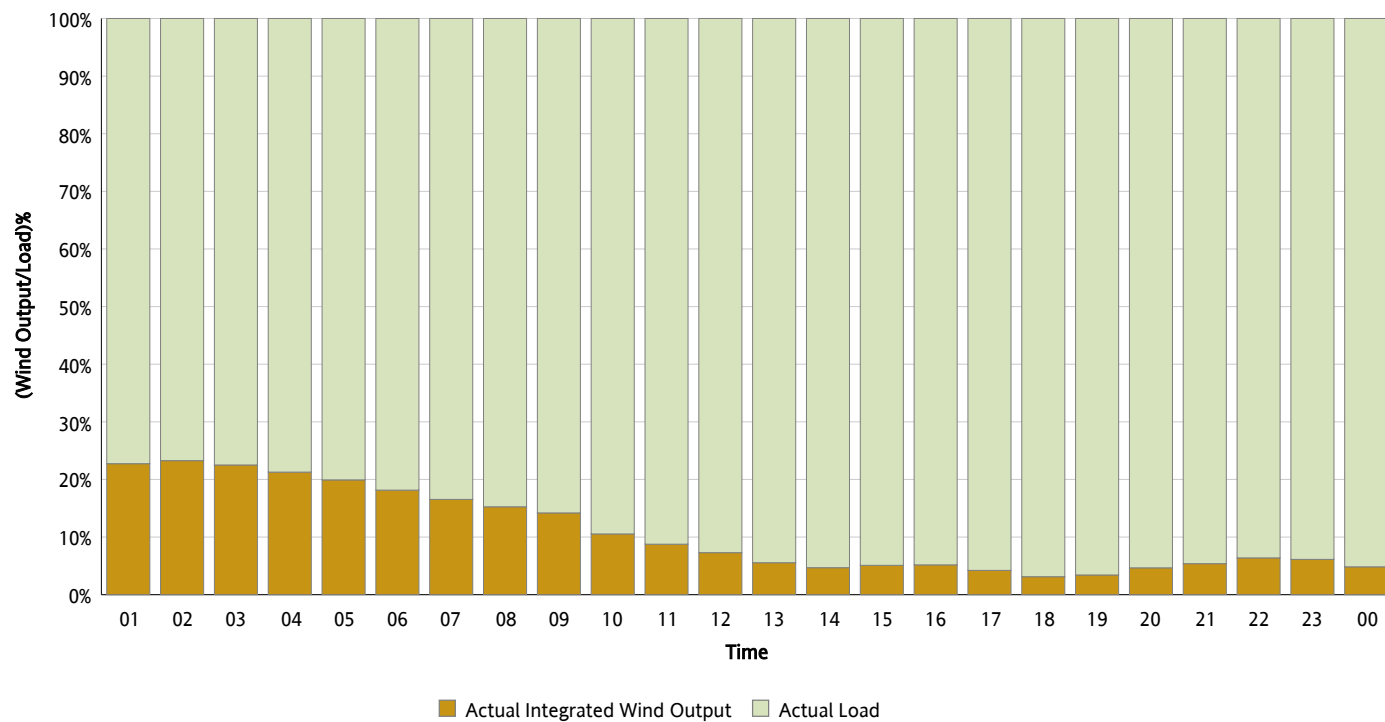
Actual Wind Output as a Percentage of the Total Installed Wind Capacity

01/19/2013



Actual Wind Output as a Percentage of the ERCOT Load

01/19/2013



ERCOT Load vs. Actual Wind Output

01/12/2013 - 01/19/2013

